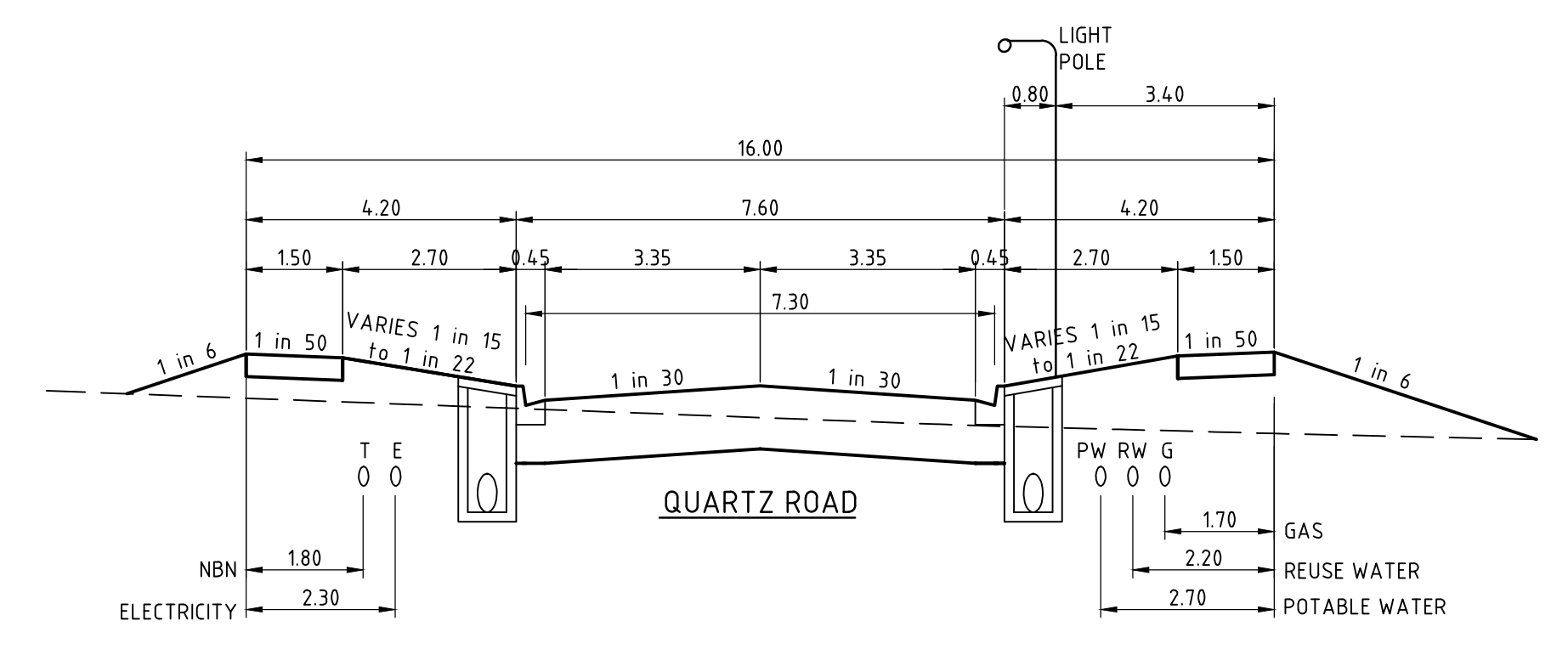
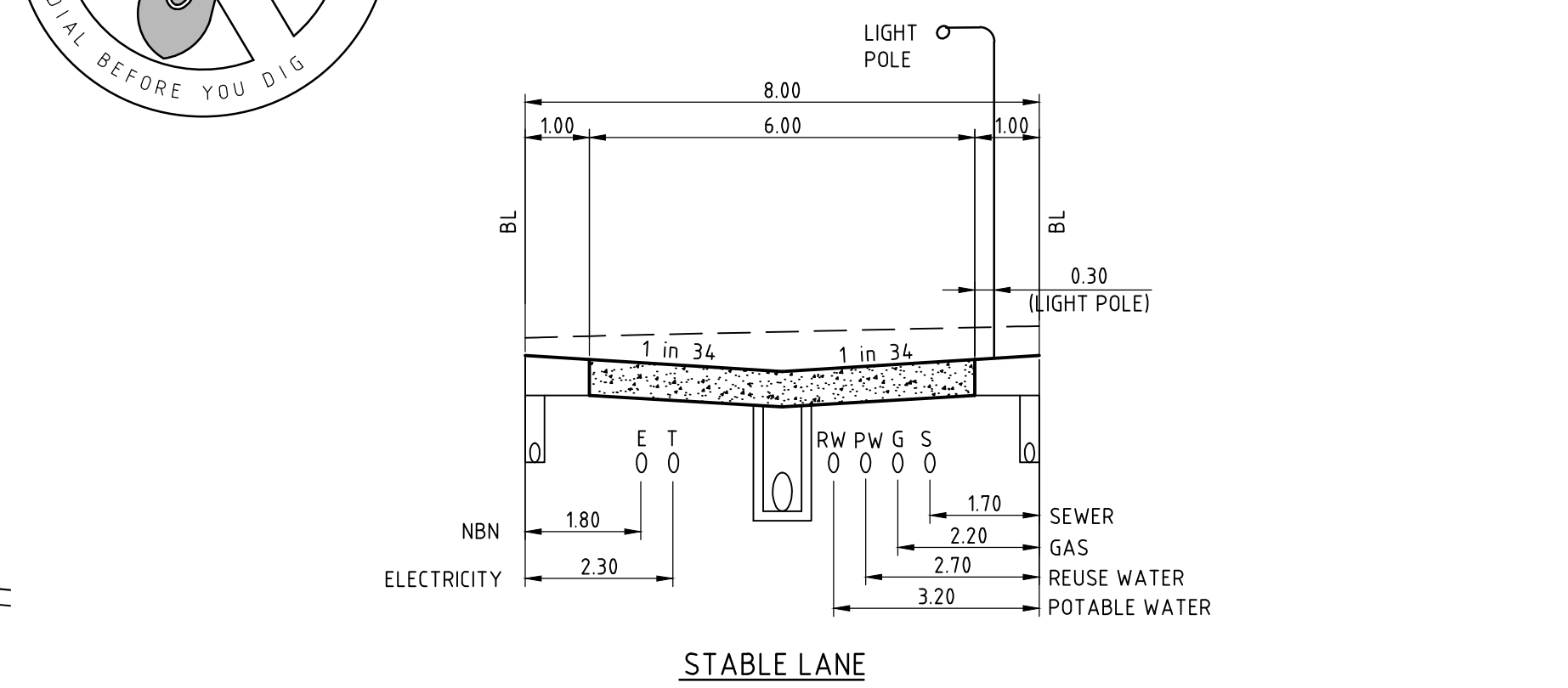
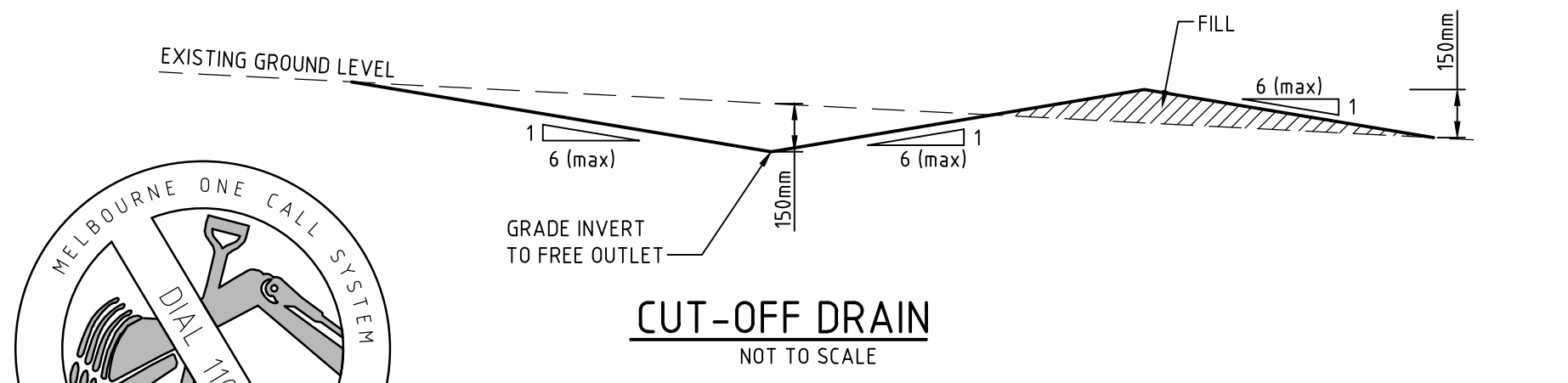


STREET	RESERVE WIDTH	GAS		WATER		ELECTRICITY		NBN		BK of KERB
		SIDE	OFFSET	REUSE WATER	POTABLE WATER	U/G CABLE	U/G CABLE	SIDE	OFFSET	
BURROW DRIVE	16.00m	N	1.70	N	2.20	S	2.30	S	1.80	4.20
QUARTZ ROAD	16.00m	E	1.70	E	2.20	E	2.70	W	1.80	4.20
STABLE LANE	8.00m	E	2.20	E	2.70	E	3.20	W	1.80	1.00

- N - NORTH, S - SOUTH, E - EAST, W - WEST
- TELECOM AND ELECTRICITY CABLES TO BE CONSTRUCTED IN A COMMON TRENCH
 - GAS AND WATERMANS TO BE CONSTRUCTED IN A COMMON TRENCH.

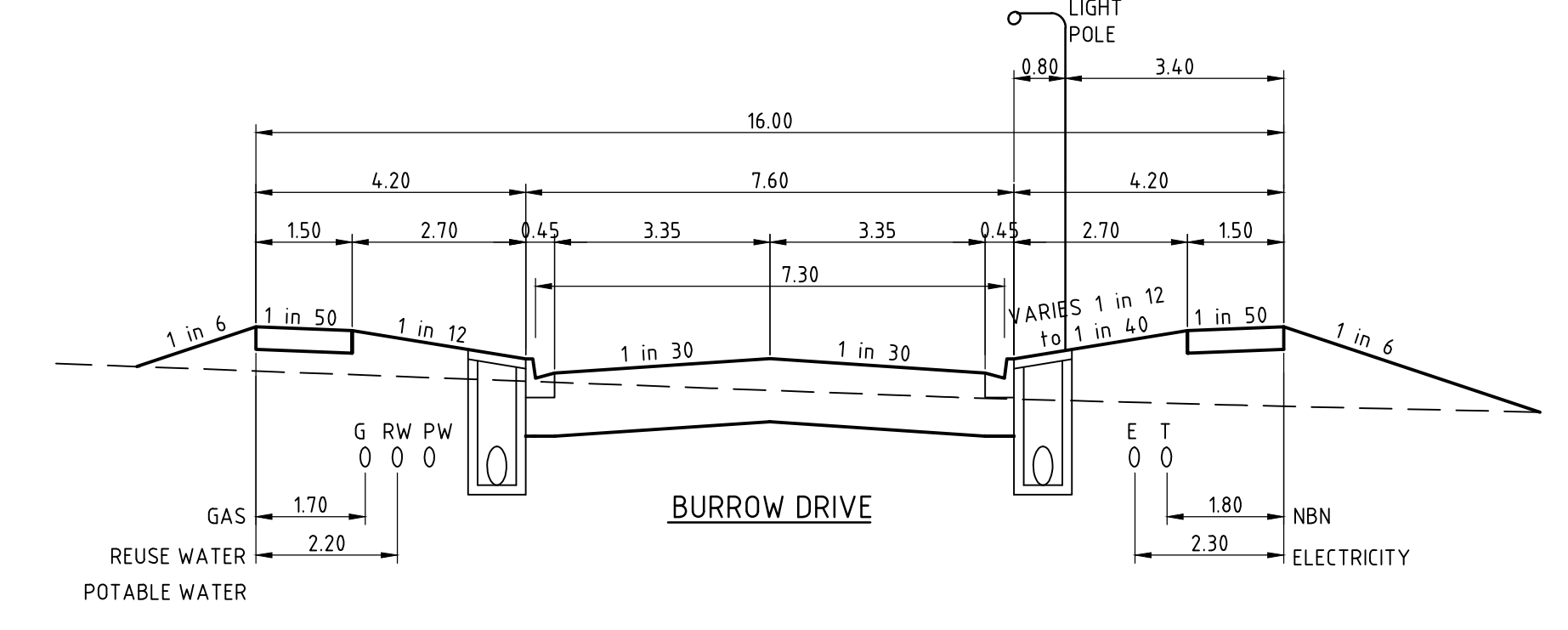
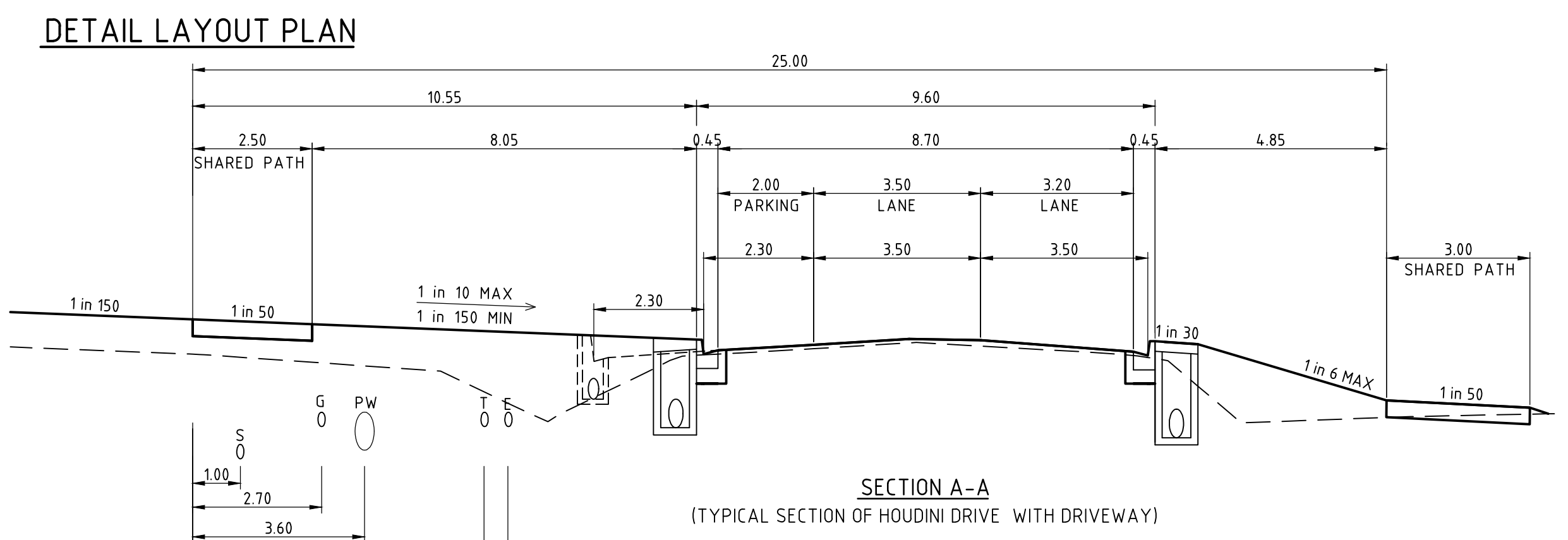
WARNING
BEWARE OF UNDERGROUND SERVICES

THE LOCATION OF UNDERGROUND SERVICES SHOWN ARE APPROXIMATE ONLY AND THEIR EXACT POSITION SHOULD BE PROVEN ON SITE



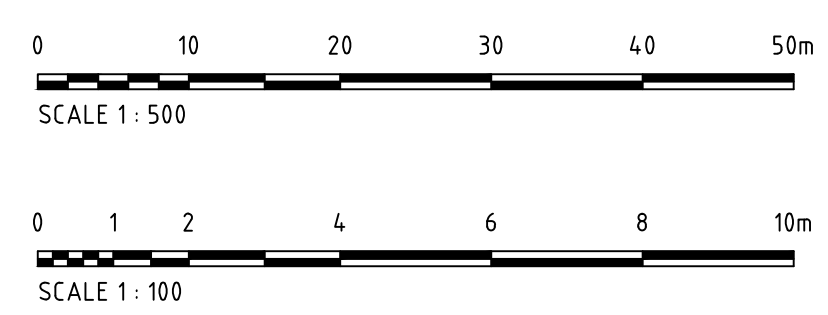
PROPOSED WORKS LEGEND

55.25	EXISTING SURFACE LEVEL	→	DIRECTION OF FALL
F67.00	FINISHED SURFACE LEVEL	→	OVERLAND FLOW PATH
BL67.00	FINISHED SURFACE LEVEL ADJACENT TO FOOTPATH	→	BOLLARD
T67.00	TOP OF BATTER LEVEL	→	STREET SIGN
---65.5---	PROPOSED CONTOUR	→	NO ROAD SIGN
B2	BARRIER KERB (REFER TO GAA STD DWGS FOR DETAILS)	→	CONCRETE END WALL (REFER TO GAA STD DWGS FOR DETAILS)
M2	DISH DRAIN (REFER TO GAA STD DWGS FOR DETAILS)	→	TGSI'S
1	STORMWATER PIT REFERENCE NUMBER	→	EXISTING TREE TO BE RETAINED
□	SIDE ENTRY PIT (S.E.P.)	→	EXISTING TREE TO BE REMOVED
□	JUNCTION PIT (J.P.)	→	TBMS
□	GRATED PIT (G.P.)	→	PSMS
H	HOUSE DRAIN	→	FILL GREATER THAN 300mm
□	PROPERTY INLET	→	GAS & WATER CONDUIT
□	PROPOSED SEWER MANHOLE	→	SEWER
□	PROPOSED SEWER INSPECTION SHAFT	→	STORMWATER DRAINAGE



AS BUILT DRAWING

Issue	Description	Date
A2	ADDED LEGEND	24.09.14
A1	AS BUILT	05.05.14
C4	ADDITIONAL DRIVEWAY ADDED LOT 310	05.02.14
C3	STABLE LANE REVISION	13.11.13
C2	REVISED SEWER MAIN AGLINMENT. REMOVED BOLLARDS.	14.10.13
C1	CONSTRUCTION ISSUE	08.10.13
T3	REVISED LINEMARKING AT INTERSECTION OF BURROW DRIVE & PLUMPTON ROAD	30.09.13
T2	REISSUE TO COUNCIL	20.09.13
T1	TENDER ISSUE	30.08.13



Status	AS BUILT
Scales	AS SHOWN
Original Size	A1
Height Datum	DATUM
Grid	GRID
Filename	C3200-AA005214-VCD-00DETAIL_PLANDWG

Project	SHIRE OF MELTON BLOOMDALE ESTATE STAGE 3
Title	DETAIL PLAN TYPICAL CROSS SECTIONS AND SERVICE OFFSET SCHEDULE

Hyder

HYDER CONSULTING PTY LTD
Level 16, 31 Queen Street
Melbourne, Vic 3000
Australia
ACN 104 485 289

Tel: +61 (0)3 8623 4000
Fax: +61 (0)3 8623 4111
www.hyderconsulting.com
© Copyright reserved

Drawing No. **C3200 - AA005214 - A2** | Project No. | Issue