

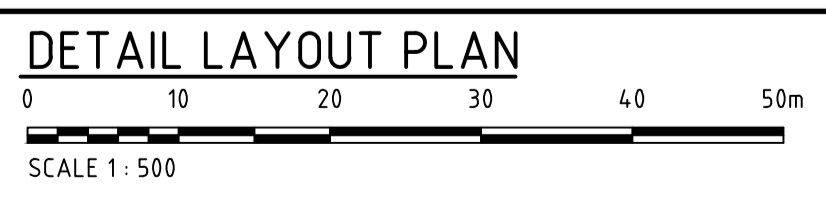
PROPOSED WORKS LEGEND	
55.25	EXISTING SURFACE LEVEL
F67.00	FINISHED SURFACE LEVEL
BL67.00	FINISHED SURFACE LEVEL ADJACENT TO FOOTPATH
T67.00	TOP OF BATTER LEVEL
-65.5	PROPOSED CONTOUR
B2	BARRIER KERB (REFER TO GAA STD DWGS FOR DETAILS)
M2	DISH DRAIN (REFER TO GAA STD DWGS FOR DETAILS)
1	STORMWATER PIT REFERENCE NUMBER
[Symbol]	SIDE ENTRY PIT (S.E.P.)
[Symbol]	JUNCTION PIT (J.P.)
[Symbol]	GRATED PIT (G.P.)
[Symbol]	HOUSE DRAIN
[Symbol]	PROPERTY INLET
[Symbol]	PROPOSED SEWER MANHOLE
[Symbol]	PROPOSED SEWER INSPECTION SHAFT
[Symbol]	DIRECTION OF FALL
[Symbol]	OVERLAND FLOW PATH
[Symbol]	BOLLARD
[Symbol]	STREET SIGN
[Symbol]	NO ROAD SIGN
[Symbol]	CONCRETE END WALL (REFER TO GAA STD DWGS FOR DETAILS)
[Symbol]	TGS'S
[Symbol]	EXISTING TREE TO BE RETAINED
[Symbol]	EXISTING TREE TO BE REMOVED
[Symbol]	TBMS
[Symbol]	PSMS
[Symbol]	FILL GREATER THAN 300mm
[Symbol]	GAS & WATER CONDUIT
[Symbol]	SEWER
[Symbol]	STORMWATER DRAINAGE

STREET	RESERVE WIDTH	GAS		WATER				ELECTRICITY		NBN		BK of KERB	
		SIDE	OFFSET	REUSE WATER SIDE	WATER OFFSET	POTABLE WATER SIDE	POTABLE WATER OFFSET	U/G CABLE SIDE	U/G CABLE OFFSET	SIDE	OFFSET	SIDE	OFFSET
MOUNTVIEW DRIVE (ADJACENT CALDER FWY)	13.00m	S	1.70	S	2.20	S	2.70	S	3.70	S	3.20	S	5.20
QUARTZ ROAD	16.00m	E	1.70	E	2.20	E	2.70	W	2.30	W	1.80	W	4.20
PLUMPTOWN ROAD	VARIABLE	W	1.70	W	2.20	W	2.70	W	4.90	W	4.40	W	6.20
CLACY STREET	16.00m	N	1.70	N	2.20	N	2.70	S	2.30	S	1.80	S	4.20

N - NORTH, S - SOUTH, E - EAST, W - WEST  
 1. NBN AND ELECTRICITY CABLES TO BE CONSTRUCTED IN A COMMON TRENCH IN ACCORDANCE WITH SEC STANDARD DRG.  
 2. GAS AND WATERMANS TO BE CONSTRUCTED IN A COMMON TRENCH.  
 3. \* INDICATES OFFSET FROM BACK OF KERB OR EDGE OF CONCRETE.

**WARNING**  
**BEWARE OF UNDERGROUND SERVICES**  
 THE LOCATIONS OF UNDERGROUND SERVICES ARE APPROXIMATE ONLY AND THEIR EXACT POSITION SHOULD BE PROVEN ON SITE. NO GUARANTEE IS GIVEN THAT ALL EXISTING SERVICES ARE SHOWN.

NOTE:  
 1. REFER TO DWG. C6001 FOR GENERAL NOTE DETAILS.



Issue	Description	Date
C2	ADDED LEGEND	24.09.14
C1	CONSTRUCTION ISSUE	02.07.14
T1	TENDER ISSUE	20.05.14
P2	ADDED SPED HUMP	16.05.14
P1	PRILIMINARY ISSUE	26.03.14

Client

CONSTRUCTION ISSUE	
Scales	1 : 500
Original Size	A1
Height Datum	AHD
Grid	MGA
Filename	C6200-AA005214-VCD-00ROAD&DRAINAGESHEET1.DWG

CITY OF MELTON	
BLOOMDALE ESTATE STAGE 6	
DETAIL PLAN	

HYDER CONSULTING PTY LTD  
 Level 16, 31 Queen Street  
 Melbourne, Vic 3000  
 Australia  
 ACN 104 485 289  
 Tel: +61 (0)3 8623 4000  
 Fax: +61 (0)3 8623 4111  
 www.hyderconsulting.com  
 © Copyright reserved

Drawing No. C6200 - AA005214 - C2  
 Project No. AA005214  
 Issue